



...helps the environment as much as can...

*** WASTE WATER TREATMENT



EXACT

IGH

Q qualityaustria
SYSTEM CERTIFIED
ISO 9001:2008 No. AT-10310/0
ISO 14001:2004 No. AT-01397/0
BS OHSAS 18001:2007 No. AT-00569/0



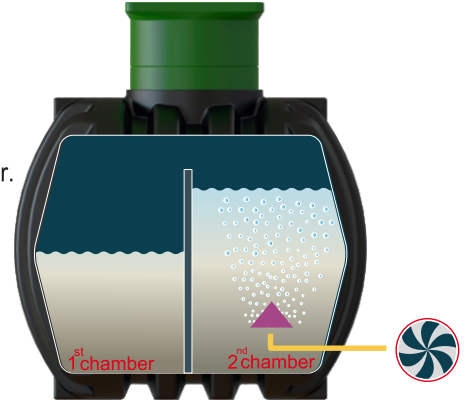
INTER CONSTRUCTION WASTE WATER TANKS



I PHASE
charging phase

I phase-charging phase

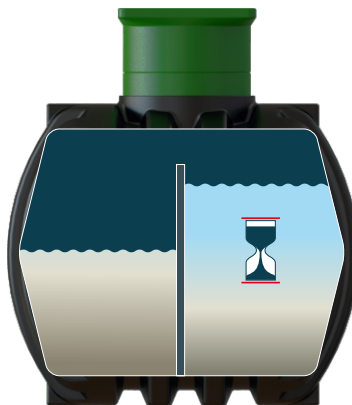
The waste water arrives in the 1st chamber. Aeration of the entire chamber leads to immediate waste water activation. The micro-organisms begin the biological cleaning process without delay.



II PHASE
aeration phase

II phase-aeration phase

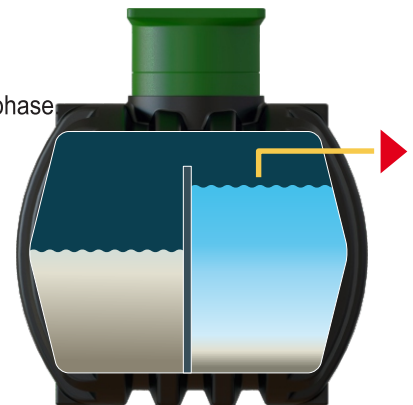
Aeration is interrupted by the control unit, the activated sludge sinks to the bottom. A clear water zone develops in the upper part of the container.



III PHASE
settling phase

III phase-calming/settling phase

The third phase is calming phase or resting phase. Aeration is interrupted by the control unit, the activated sludge sinks to the bottom. A clear water zone develops in the upper part of the container.



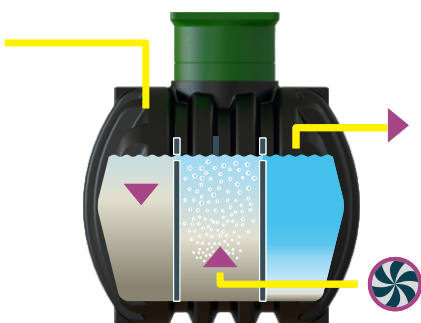
IV PHASE
extraction phase

IV phase - clean water extraction phase

The separated clear water is led from the IC tank to the receiving water (stream, river or lake) or into a percolation system.

Afterwards, the sludge is returned to the first chamber from the SBR tank and the process starts again from the beginning.

Flexible positions



Inter Construction - wastewater treatment reservoirs

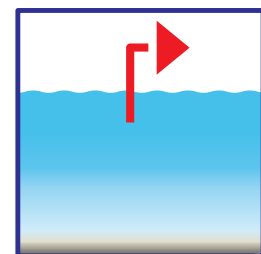
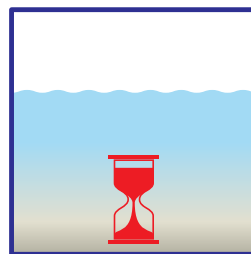
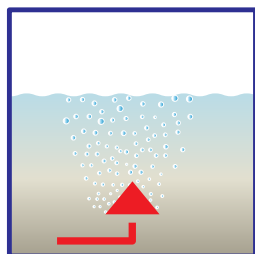
up tp 50 inhabitants

Inhabitants [max.]	Max. daily flow [L/d]	Max. organic load [kg BSB5/d]	Total volume [ltrs]
2-4	600	0,24	3200
4-6	900	0,36	5000
6-8	1200	0,48	7000
8-10	1500	0,60	9000
10-12	1800	0,72	11000
12-18	2700	1,08	13000
18-24	3600	1,44	15000
24-30	4500	1,8	17000
30-36	5400	2,88	19000
36-40	6000	2,4	21000
40-46	6900	2,76	23000
46-52	7800	3,12	25000

more than 50 inhabitants

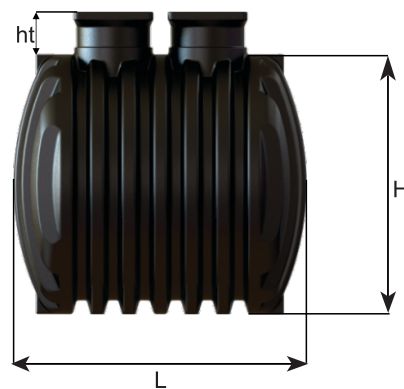
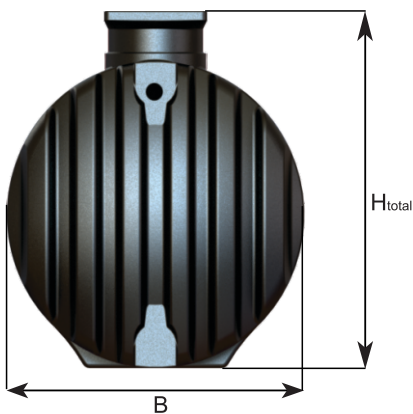
Inhabitants [max.]	Max. daily flow [L/d]	Max. organic load [kg BSB5/d]	Total volume [ltrs]
80	12000	4.80	33000
100	15000	6.00	41000
120	18000	7.20	43000
150	22500	9	51000
200	30000	12	73000

One complete system consists of: IC underground tank/s,baffle/s, telescopic dome shafts, covers



Length-L [mm]	Width-B [mm]	Height [mm]	Total volume [ltrs]
1680	1900	1950	3200
2432	1900	1950	5000
3185	1900	1950	7000
3935	1900	1950	9000
4685	1900	1950	11000
5438	1900	1950	13000
6200	1900	1950	15000
6940	1900	1950	17000
7690	1900	1950	19000
8842	1900	1950	21000
9195	1900	1950	23000
9945	1900	1950	25000

	Length-L [m]	Width-B [m]	Height [m]	Total volume [ltrs]
total no. of reservoirs				
2*17000	13,8	1,90	1,95	33000
2*21000	17,684	1,90	1,95	41000
3*15000	18,6	1,90	1,95	43000
3*17000	20,8	1,90	1,95	51000
5*15000	31	1,90	1,95	73000

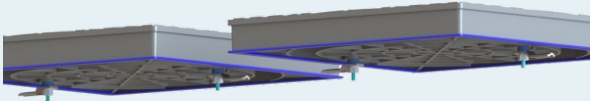




1

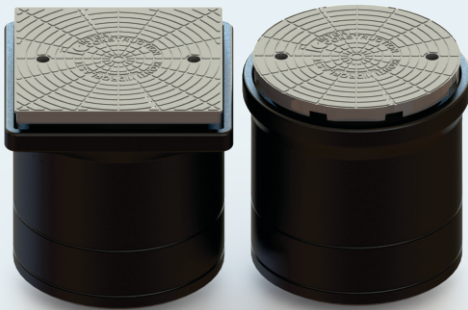
locking mechanism

The covers of IC reservoirs for wastewater treatment are equipped with locking mechanism.



2

covers

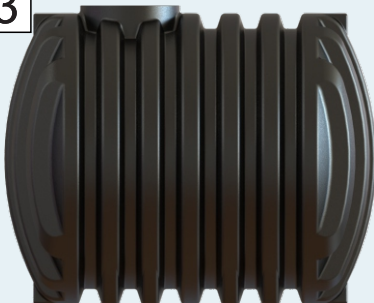


Inter waste water reservoirs dispose with two different kind of covers. We offer square cover and round cover. The dimensions of the square cover are 600x600 and the diameter of the round cover is 600 mm.

The IC underground reservoir for waste water treatment has numerous seals to effectively stop dirtiness getting into the tank. This means that seepage is not possible in any case.

3

ribbed tank



The IC wastewater tanks are extremely stable thanks to the numerous ribs. The tanks is very robust for transportation , and the excellent rigidity is already proven not only in computer simulations during the development process also it is proven in the practice throw the realized projects.

4

DN- inlet and outlet gaps



The IC wastewater tanks dispose with gaps on the sides of the tank. The dimensions of the inlet and outlet pipe are: 110,160,200,250 mm. realized projects.



Тел/ Tel:
00 38934 231 300
00 38934 231 301
00389 72 272 603
00389 72 272 604

факс/fax:
00 389 34 218 898

e-mail: interroto@gmail.com
www.inter-construction.com.mk

Индустриска Зона Прдејци, Гевгелија
Македонија

*Industrial Zone Prdejci, Gevgelija
Macedonia*



Suitable for pedestrian
loading



Suitable for vehicle
loading



Lorry-bearing